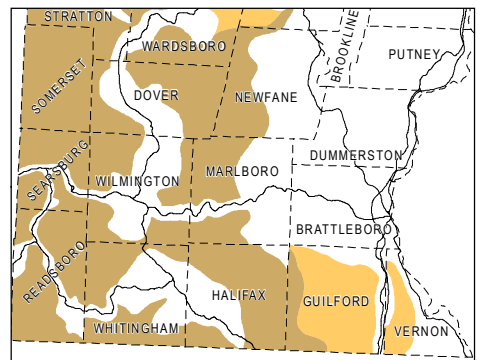


Bear habitat in Southeastern Vermont:



- Bear production habitat
- Seasonal bear habitat

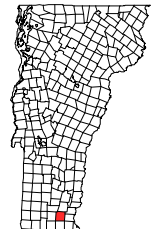
Sources:

- Historic sites and scenic areas were identified by the Marlboro Planning Commission in 1994, and updated in 2008. Locations were determined by WRC using 1:5000 base GIS data.
- Information on wildlife crossings is from work conducted by the Marlboro Conservation Commission in 2007. The crossings shown on this map are including Route 9 and South Road only.
- Public and conserved lands data were obtained from WRC mapping, the Town of Marlboro, the Vermont Land Trust, and the Vermont Conservation Lands Database developed by UVM Spatial Analysis Laboratory.
- Data on rare and threatened plant occurrences were taken from VT ANR Department of Fish and Wildlife, Nongame and Natural Heritage Program's Rare, Threatened and Endangered Species and Significant Natural Communities database (VGIS data layer ENDANGER). The database is current to February 1997. Locations are approximate, but generally within 200 meters.
- The wetlands shown are those included in the Vermont Significant Wetlands Inventory (VGIS data layer VSWI). For the most part, these data were derived from US Fish and Wildlife Service's 1:24000/1:25000 scale National Wetlands Inventory (NWI) maps. These maps show approximate locations of wetlands that are generally 3 acres or larger in size.
- Bear habitat data are from GIS data provided the University of Vermont's Spatial Analysis Laboratory. This data layer was developed from Vermont Agency of Natural Resources, Department of Fish and Wildlife habitat maps to provide a general overview of bear habitat.

# Natural and Cultural Resources

## Town of Marlboro, Vt.

April 2008



- Scenic area
- Town-designated historic site (see town plan text for description)
- Rare or threatened plant occurrence
- Deer wintering area
- Public or conserved parcel
- Wetland
- Wildlife crossing (identified on Rte. 9 and South Rd. only)



1:48,000

This map, and other maps of Marlboro, can be viewed in color at <http://www.marlboro.vt.us/region/maps>.